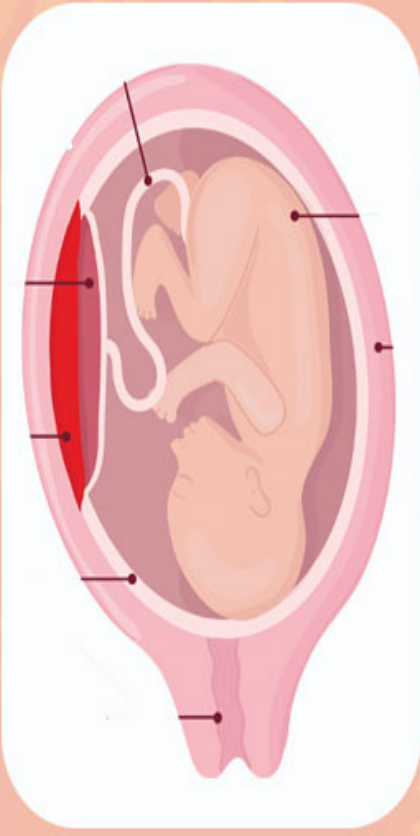




## Conditions Associated With Placental Lakes



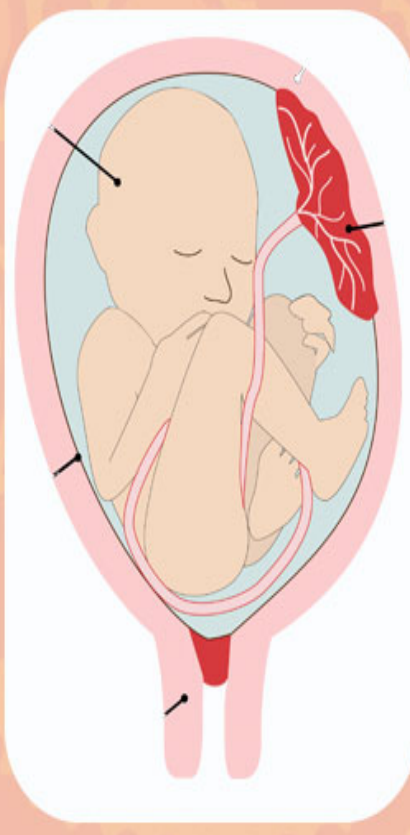
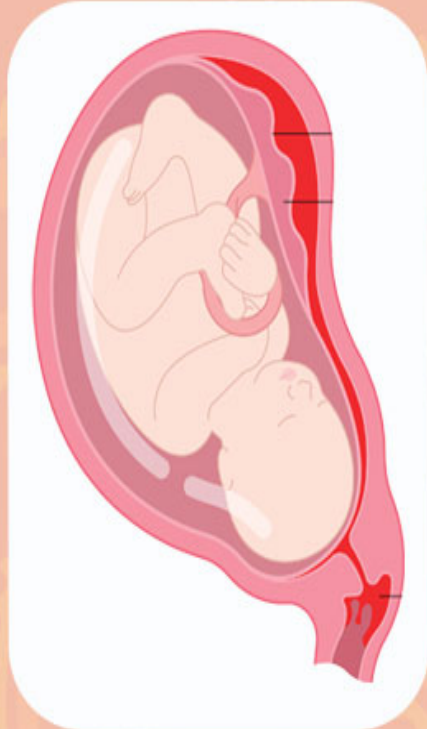
### Placentomegaly

- Increased placental thickness
- Maximum thickness at any stage of pregnancy is 4cm

### Placental insufficiency

Failure of the placenta to provide the required oxygen and nutrients

It may lead to acidosis and fetal hypoxia



### Placenta accreta spectrum

- Abnormal adherence of villi to the myometrium
- It may increase the risk of postpartum bleeding

#### References

1. Placental Lake; Radiopedia
2. Placenta Accreta Spectrum; NCBI
3. Placental Insufficiency; NCBI
4. Placentomegaly; Radiopedia