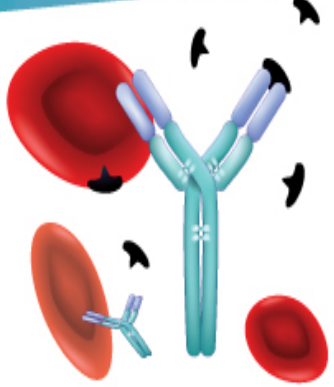


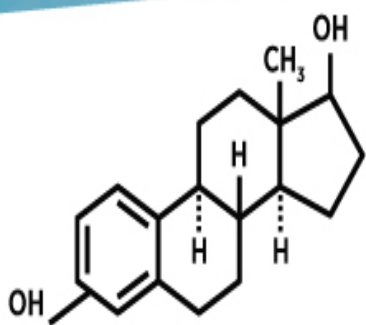
Causes Of Recurrent Implantation Failure



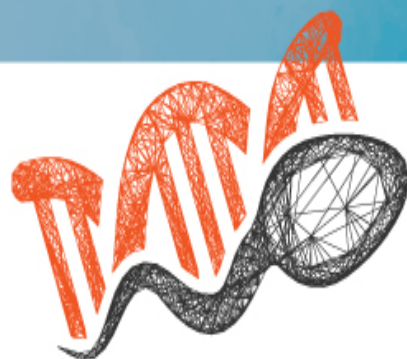
Immunological factors



Psychological factors and lifestyle



Hormonal and metabolic disorders



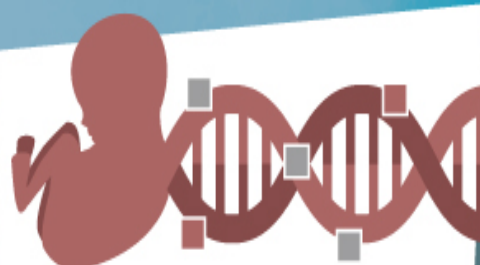
High level of sperm DNA fragmentation



Infections



Anatomical abnormalities of the uterus



Genetic problems in the embryo

Reference:

- 01 Recurrent Implantation Failure: The Role of the Endometrium; National Institutes of Health