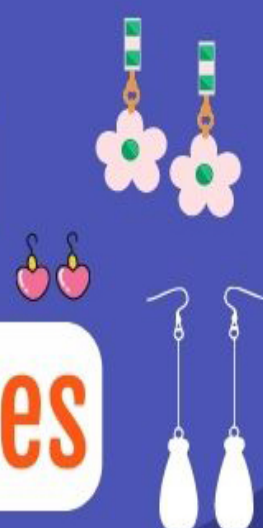




# Six Types Of Earrings Closures



## Screw back

It's one of the most secure types that inhibits tugging.



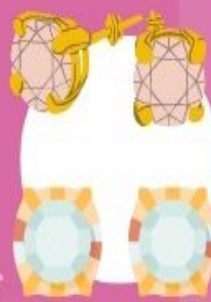
## Butterfly back

They are also known as push-or friction-back earrings and are easy to use.



## Studs

These require pushing a round and flat backing onto the earring post until there is a clicking sound.



## Hoops

Most circular earrings have hoop-style clasp closures and offer a snug fit.



## La poussette

Their press and release mechanism provides the convenience of studs and the security of screw-back earrings.



## Lever back

These enclosures use spring-enabled levers connected to the earring with a hinge.

