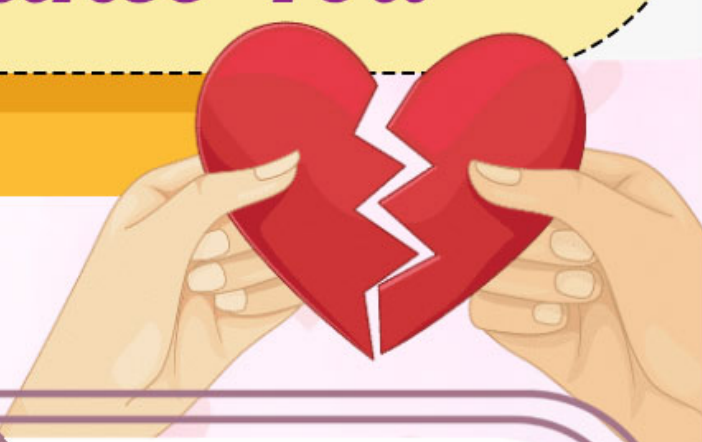


Behaviors That Indicate A Person *Dislikes You*



They avoid eye contact and maintain a distance with their arms closed during a conversation.

They avoid you by making excuses about being busy almost too often.



They hardly ask questions about you or show any interest in your life.

They check their phone or watch to see the time often whenever they're with you.



They give half-hearted replies and fake a smile without any genuine emotions.

They never face you directly with their feet pointed toward you.

