

Causes Of Abnormal Babinski Reflex In Children Aged Two Years And Older



CNS infections,
such as meningitis



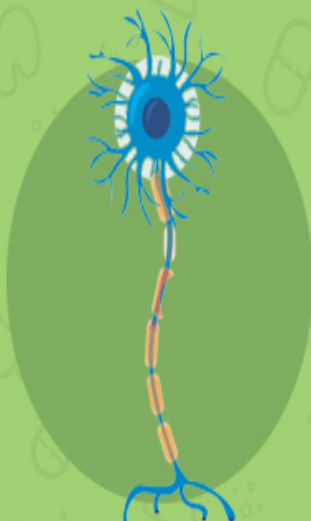
Brain or spinal
cord tumor



CNS defects,
including brain or
spinal cord defects



Amyotrophic lateral
sclerosis (ALS) or
Lou Gehrig's disease



Multiple sclerosis



Brain or spinal
cord injury

