

# DIFFERENTIAL DIAGNOSIS OF RINGWORM INFECTIONS

## Name Of The Condition

## Characteristic Signs



Discoid eczema

Coin-shaped  
confluent lesions



Granuloma annulare

Raised ring-like  
lesions, mostly seen  
on hands and feet



Annular psoriasis

Raised rashes or  
scales in gray or  
whitish color



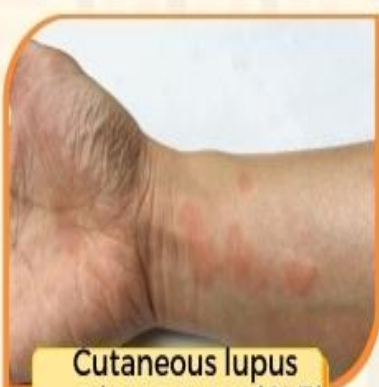
Pityriasis rosea

Scaly pinkish  
rashes or skin  
inflammation



Impetigo

Red sores or  
blisters



Cutaneous lupus  
erythematosus (CLE)

Red scales or  
patches in disk or  
coin shape

### References:

1. Diagnosis and Management of Tinea Infections; American Academy of Family Physicians
2. Tinea corporis; Dermnet NZ
3. Common Tinea Infections in Children; American Academy of Family Physicians