

NOTABLE CAUSES OF **NEONATAL** BREAST SWELLING

Neonatal mastauxe

Exaggerated response to maternal estrogen hormones, leading to enlarged breasts.

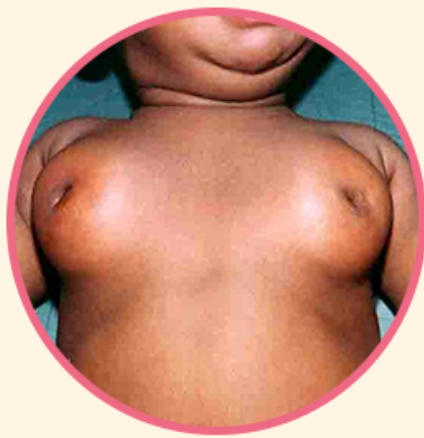


Image source: National Institutes of Health

Neonatal galactocele



Image source: ResearchGate

Rare milk-filled cyst in the mammary gland tissues.

Neonatal gynecomastia

Enlargement of breasts of baby boys due to maternal hormones in their bodies.



Image source: Semantic Scholar

Neonatal breast abscess



Image source: Semantic Scholar

Infection and enlargement of the breast tissues due to bacterial infections, often due to Staphylococcus bacteria.

References

1. Neonatal Mastitis: A Clinico-Microbiological Study; Journal of Neonatal Surgery
2. What Causes Neonatal Mastitis?; Pediatric Education
3. Neonatal Mastitis: Controversies in Management; National Institutes of Health
4. Neonatal Mastauxe (Breast Enlargement of the Newborn); National Institutes of Health