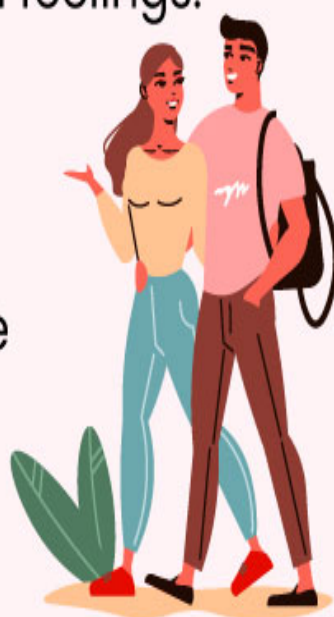


Difference

BETWEEN A SOUL TIE AND A SOULMATE

Soulmate

- ♥ Soulmates do not try to exercise control in the relationship.
- ♥ Soulmates share mutual feelings.
- ♥ Soulmates need efforts to last long.
- ♥ Soulmates bring positive influence in life.



Soul Tie

- ♥ Soul ties can take over and dominate the relationship.
- ♥ Soul ties can be one-sided.
- ♥ Soul ties last long, even without active efforts.
- ♥ Soul ties can turn negative or positive over time.

