

ATYPICAL SYMPTOMS OF

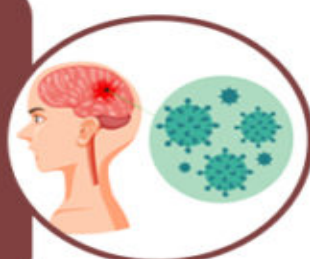
HAND, FOOT,

AND MOUTH DISEASE



Aseptic Meningitis

Inflammation with negative bacterial cultures



Polio-Like Paralytic Syndrome

Weakness on one or more arms and legs



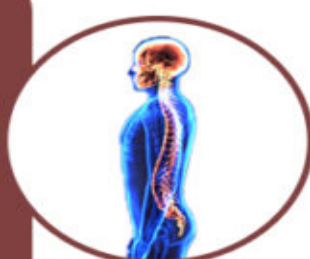
Brainstem Encephalitis

Inflammation of the brainstem structures



Acute Transverse Myelitis

Spinal cord disorder with weakness and sensory change



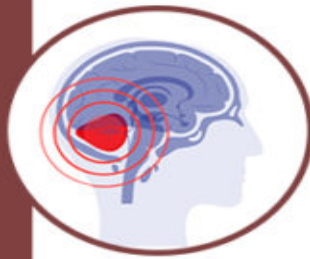
Guillain-Barre Syndrome

Paralysis and weakness due to an autoimmune attack on nerves



Acute Cerebellar Ataxia

Poor voluntary muscle control with clumsy movement



Benign Intracranial Hypertension

Raised cerebrospinal fluid pressure without masses or dilation



Reference

1. Hand Foot And Mouth Disease; National Institutes of Health