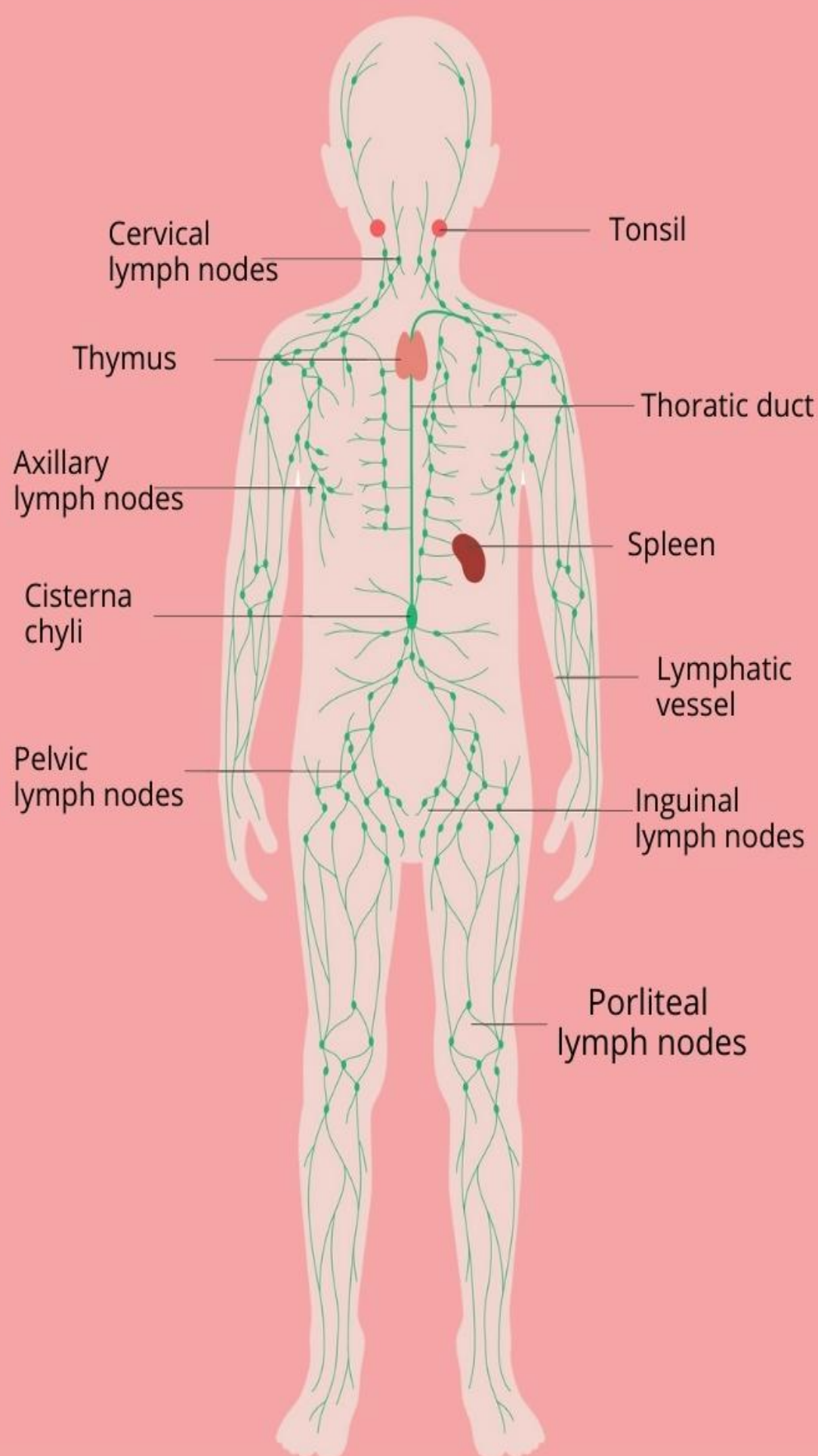


Swollen Lymph Nodes

AND COMMON CAUSES



Cervical or neck nodes

Bacterial or viral respiratory and throat infections

Nodes under jawline

Tooth decay or abscess

Nodes behind the ears

Ear infections

Armpit nodes

Skin infections such as impetigo or poison ivy

Groin nodes

Athlete's foot

Nodes on all parts

Blood infections, eczema, and infectious mononucleosis