

# Tips For Using A Peel-Off Mask



Wash your face with a gentle cleanser and pat it dry before applying the mask.

Take a generous amount of the mask liquid and spread it on your fingers.



Apply the mask liquid from the center to the outer edges of your face.

Do not touch or cover your brows with the mask liquid.



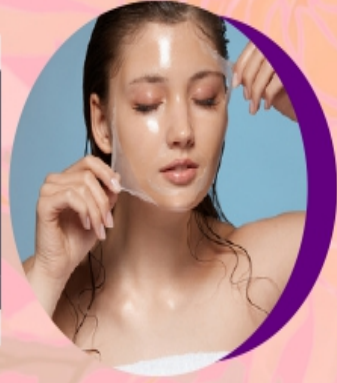
Apply an even and thick layer of the mask liquid.

Wait for at least 15 to 20 minutes for the mask to fully dry.



Start peeling off the mask from the forehead, working downwards.

Gently pull the outer edges of the mask to peel it off effectively.



Wash your face with cold water to close the pores.