

Steps Involved In Replacing A *Toilet Flange*

Step 1

Cut off the water supply to the toilet and flush it to empty the toilet tank.



Step 2

Detach the water supply hose from the toilet tank.



Step 3

Plunge out the remaining water at the base of the toilet bowl.



Step 4

Detach the flush tank from the bowl and set it aside.



Step 5

Detach the bowl from the floor and set it aside.



Step 6

Scrape off the wax on the flange and remove the rubber lip.



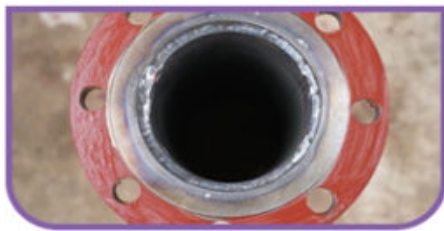
Step 7

Unscrew the flange bolts and extricate the old flange.



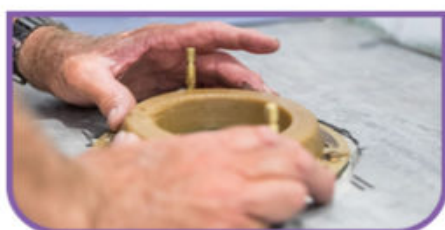
Step 8

Install the new flange with the tools provided with the flange.



Step 9

Replace the rubber lip and affix a new wax ring.



Step 10

Reinstall the flush bowl and the tank and reconnect the water supply hose.

