

# Points To Consider

When Buying A

## USB To HDMI Adapter



### Connection ports

Ensure the adapter you choose is compatible with the ports of your video device.



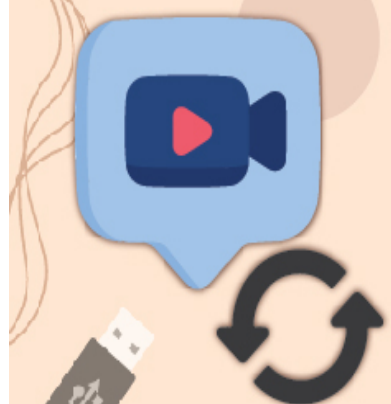
### Versatile use

Ensure the adapter has a broad range of compatibility for practical use.



### Video refresh rate

A USB to HDMI adapter must support a refresh rate of 60Hz for optimum quality.



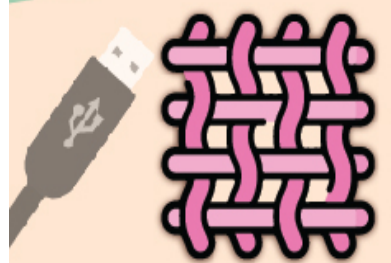
### Resolution

USB adapters with the feature to extend the image space offer a better streaming experience.



### Material

Adapters made with premium quality materials may offer better durability.



### No additional drivers

Consider a plug-and-play device that requires no software or setup for installation.



### Cable length

Ensure the cable length of the adapter is neither too short nor too long to avoid inconvenience.

