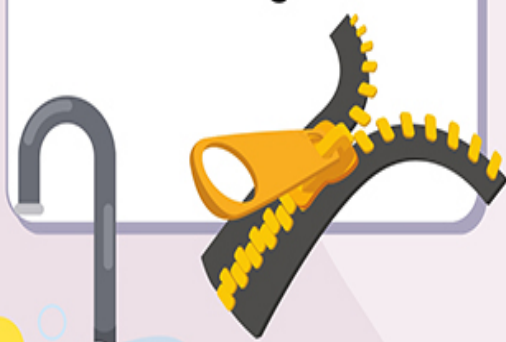


# Tips To Follow When Buying A Bath Toy Storage

Ensure the toy storage holds all the bath toys your child owns.



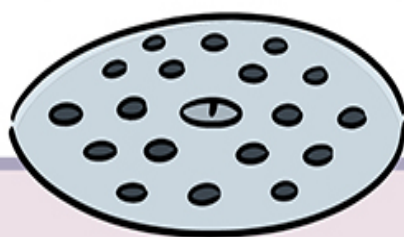
Storage with easy accessibility, such as a lid or a zip, helps prevent toys from being stuck.



Toy storage with a suction cup sticks on non-porous tiles without toppling.



Ensure the toy storage has proper drain flow to keep the bath toys dry.



Some organizers are adjustable in length and go directly into the tub. Ensure they are compatible with the bathtub.



Drain collectors come in handy if you hang the toy storage away from the bathtub.

