



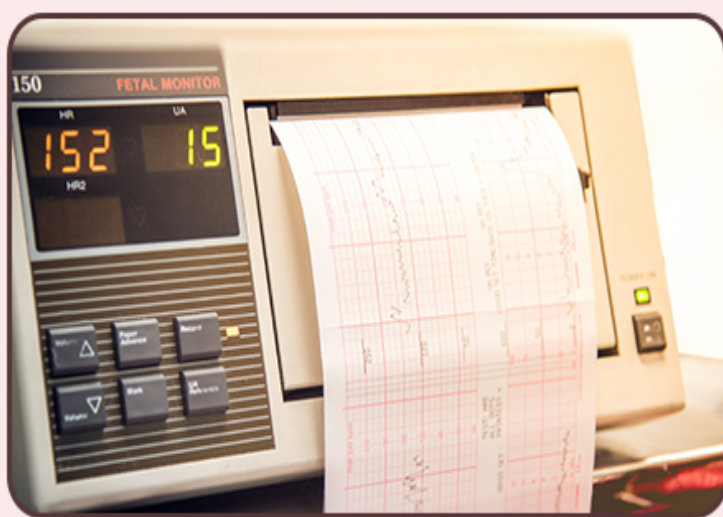
# STEPS FOR EPIDURAL ADMINISTRATION DURING LABOR

## Procedure



- Insertion of drip into the arm
- Positioning upright or on the side with assistance
- Application of cold, antiseptic solution to prepare the injection site
- Insertion of a catheter with the epidural medication into the spine
- Removal of the needle, leaving the catheter secured with a bandage

## After Epidural Insertion



- May get pain relief within approximately 15 minutes
- May have comfortable movement but be cautious not to dislodge the catheter
- Additional medication may be administered if needed
- Fetal heart rate and contractions will be monitored continuously