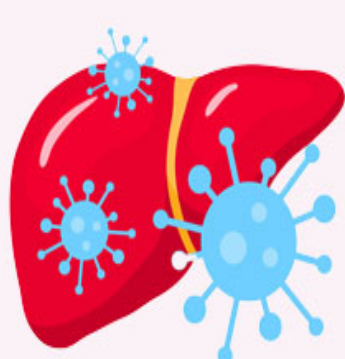
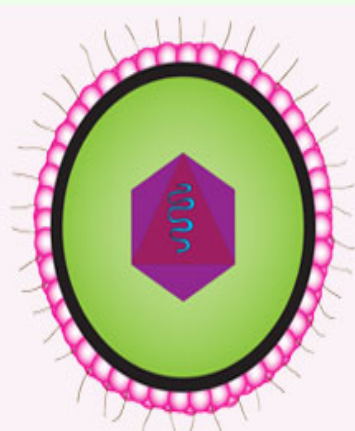


HEALTH CONDITIONS

THAT MAY MIMIC INTRAHEPATIC CHOLESTASIS OF PREGNANCY



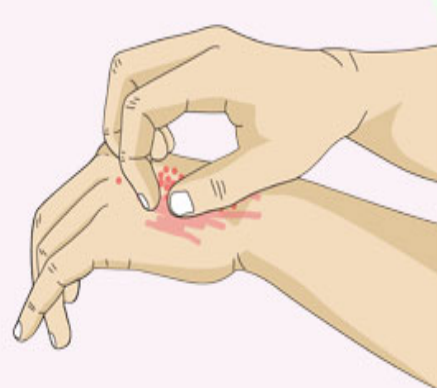
Hepatitis, including autoimmune hepatitis and viral hepatitis



Cytomegalovirus infection



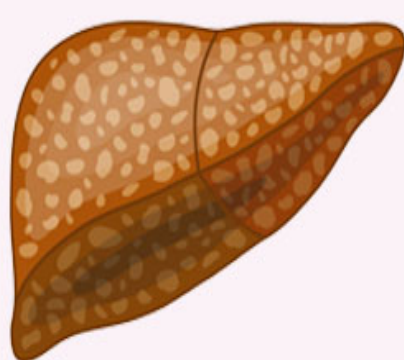
Gallbladder diseases



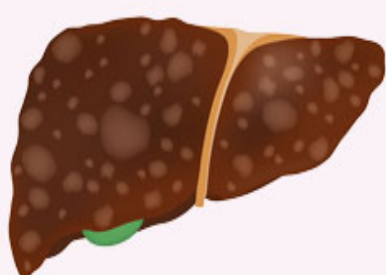
Skin conditions such as eczema causing itch



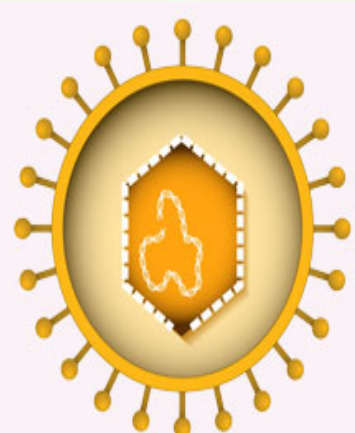
Preeclampsia or early HELLP syndrome



Acute fatty liver



Liver cirrhosis and other liver problems



Epstein Barr virus infection

Reference:

- 1 Cholestasis In Pregnancy; King Edward Memorial Hospital