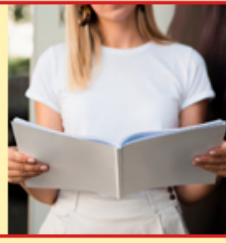


Tips To Follow When Using An IPL Hair Removal Device



If you have a history of skin cancer, consult your doctor before using the device.



Read the manufacturer's instructions carefully.

Always shave before using the IPL device.



Begin with a patch test and observe the area for 24 hours before use.

Use the device in dry, water-free spaces.



Do not use the device immediately after a skin peeling treatment.

Avoid using the device on broken skin areas.



Do not use the device on moles and dark birthmarks.

Skip using the device on darker areas such as nipples and genitals.



Do not wax or pluck unwanted hair between IPL sessions.