

FACTS ABOUT FETAL HEART RATE MONITORING



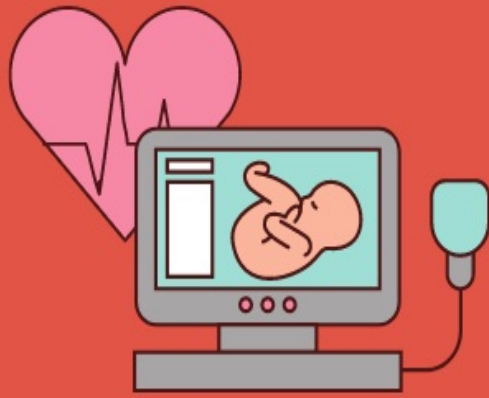
Measurements using abdominal ECG are more reliable



It can tell the oxygen supply to the baby



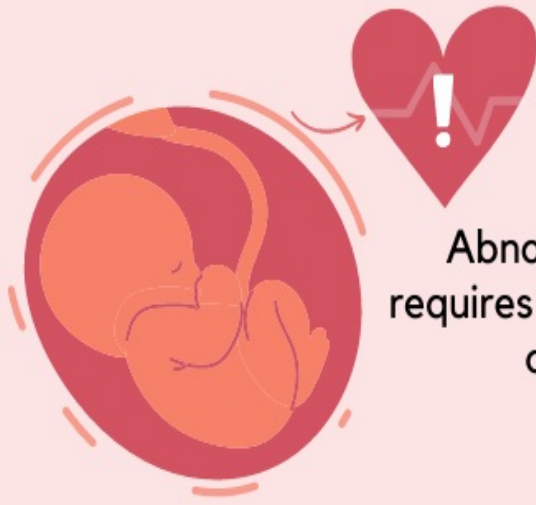
Increases when the baby moves in the womb



Initial weeks the heart sounds can be softer



Changing labor position may change the fetal heart rate



Abnormal heart rate requires prompt evaluation and actions

References:

1. What fetal heart rate monitoring can – and can't – tell us; UT Southwestern Medical Center
2. Accuracy and reliability of fetal heart rate monitoring using maternal abdominal surface electrodes; National Institutes of Health