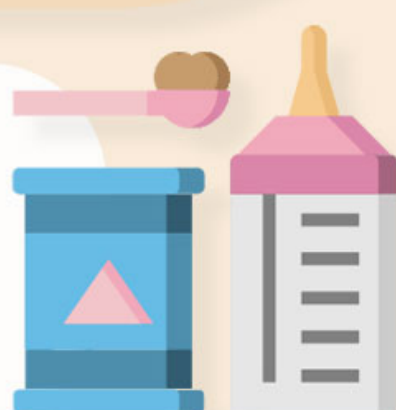


Preventing Water Intoxication By Avoiding Overdilution Of Infant Formula

Ready-to-feed, non-concentrated formula does not require water addition.



Concentrated liquid and powder formulas require water as per the manufacturer's instructions.



Add water only as per the manufacturer's instructions or as directed by a pediatrician.



Never add more water to increase the formula's quantity. Make more formula in a separate bottle if you need more.



Take the water in the bottle first and then add the measured powder to avoid measurement errors.



Discard the leftover formula. Do not add more powder and water to it to refeed your baby.



References

1. How to Safely Prepare Baby Formula With Water; American Academy of Pediatrics
2. With the baby formula shortage, what should I do if I can't find any?; American Academy of Pediatrics